



Kongoola is a family oriented lodge located in Mt Hotham's picturesque Davenport area.

It was built entirely by its members in the 1970s and they have continued to own and maintain this charming facility for four decades.

Kongoola is a communal lodge, designed to operate with a minimum of fuss.

The lodge's members aim to provide quality accommodation at an affordable rate. Its facilities suit guests of all ages, keen to enjoy Mt Hotham's many activities and attractions in both summer and winter.

The Kongoola Ski Club is proud to be able to share its lodge with you.





facilities

These facilities are available for the use and enjoyment of all members and guests during their stay at Kongoola.

- shared kitchen, dining and living areas.
- seven bedrooms in total with six bedrooms accommodating between four and six people and one double bedroom with en suite. The lodge has the capacity to sleep 30 people at any one time and depending on your booking you may have to share your room with others.
- separate male and female bathrooms.
- the modern kitchen has every convenience needed for your stay on the mountain. It includes gas cook top stoves, electric ovens, microwaves, refrigerators & freezers, dishwashers and a plentiful supply of pots, pans, cutlery etc.
- tea, coffee, sugar and cleaning products are provided by the lodge.
- there is ample provision for food storage including a large cool room.
- the lodge is centrally heated with a hydronic panel system. For your comfort there are individual controls in each bedroom.
- laundry with washing machine and dryer.
- ski storage area and large drying room.
- wood-fuelled fire in the large living room.
- games room with table tennis table + pool table.
- wireless internet access is available for a fee on either an hourly, daily or weekly basis. Instructions for how to initiate this service can be found on the pin board in the living room.
- separate sound system in both the living and games rooms.
- rear balcony with a gas bbq overlooking spectacular views.
- an on-site manager (winter only) to assist you during your stay.



guidelines

- all lodge bookings must be made, confirmed and paid through a Kongoola Member.
- our licence permits you to consume your own alcohol in the lodge.
- bring food and drink to last your stay, or you can simply choose to eat out. Supplies can also be bought on the mountain.
- please provide your own toiletries and towels.
- all beds have innerspring mattresses and mattress protectors, but **please bring your own linen** (pillow cases, sheets, blankets, sleeping bags etc) for each bed you will be using.
- in order to keep accommodation costs down each guest is required to perform small lodge duties most days. These are clearly displayed in each bedroom.
- at the end of your stay please leave Kongoola clean and tidy.
- for the comfort of all, Kongoola has a **Code of Conduct** that everyone is required to observe.
- no pets are allowed in the Alpine National Park.



guest information - winter

- Mt Hotham authorities require you to carry snow chains during winter and fit them when advised. Besides the concern for your safety there is a hefty fine if you don't.
- be sure to **use anti-freeze** in your car's radiator.
- all diesel vehicles should use alpine distillate.
- a fee is payable for entry into the Mt Hotham National Park during the ski season. Make sure you comply with all parking controls and take note of the parking bay where you leave your car.
- use the temporary parking bays opposite Jack Frost while you load and unload your vehicle. Kongoola has a sled which guests can use to transport your luggage over the snow. A key to unlock the sled can be found on a hook in the entrance foyer. Please ensure that you return the sled and lock it in place on the pole near the front door after use. A commercial over the snow transport service also operates during peak arrival times if you prefer to have your gear carried for a fee.
- bus services to Mt Hotham operate from Melbourne constantly throughout the season.
- lift tickets are available at Jack Frost, Big D & Hotham Central in the main part of the village.
- some ski runs are close to the lodge with access to the main village via ski trails or the free village bus service.
- Mt Hotham has everything you need to enjoy your time on the mountain including plenty of restaurants, bars, supermarkets, day spas, take away food outlets and ski hire stores.
- the Dinner Plain village is easily accessible via the **free half hourly** bus service.



guest information - summer

- contact your introducing member to make summer bookings.
- it is advisable to use anti-freeze in your car's radiator even in summer.
- Mt Hotham has plenty of activities to enjoy over the summer period. These include spas, bush walking, motorcycle touring, horse riding, tennis, golf, XC mountain biking, road cycling, 4WD touring, fly fishing and white water rafting. Also with great food and wineries found throughout the region there are many reasons to stay at Kongoola with family and friends in the months without snow. To keep up-to-date with everything at hotham over summer go to www.mthotham.com.au
- the General Store is a pub within walking distance that stays open all year. It also has a supermarket which can cater for all your daily needs.

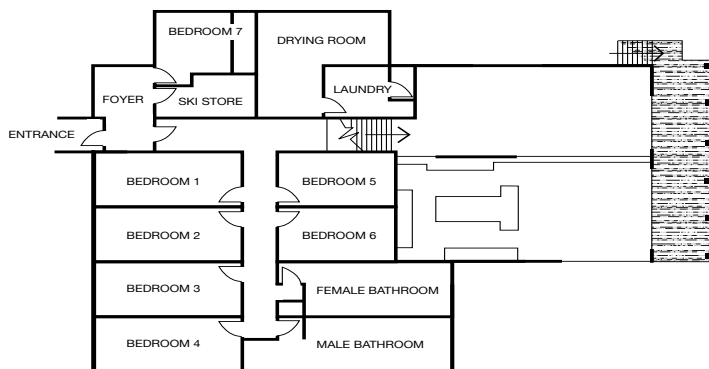
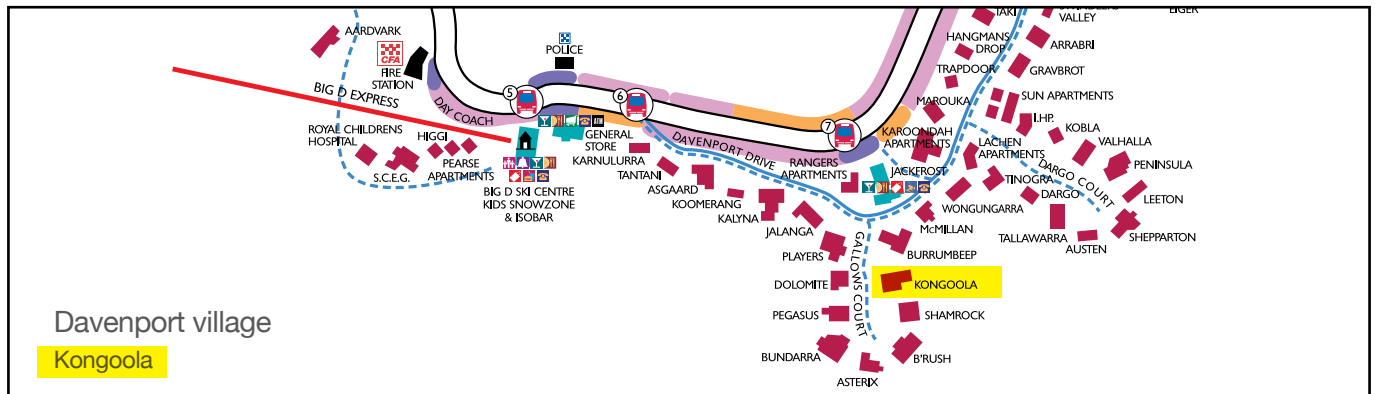
general information

- entry to the lodge is via a push button code or member's key. The code is changed weekly and you should obtain the code from your booking member before leaving home. A door bell is also provided should you forget the code.
- Kongoola is a non-smoking lodge
- the use of candles and/or smoking in the bedroom are not permitted
- fire regulations require you to fill out the attendance book upon your arrival. Please read the fire safety instructions in each bedroom and become familiar with all exits.
- under no circumstances are ski boots or external footwear to be worn around the lodge beyond the ski store and drying room.
- the booking officer allocates rooms and beds. A bed allocation plan is displayed in the entrance hall and these must not be altered by any member or guest without consulting the lodge manager or booking officer.
- if you wish to go skiing on your last day please clean your room and pack up your gear and place it on the bottom bed nearest the door before you hit the slopes. Rooms must be vacated by 5pm.
- all exit doors must be locked behind you when you enter or leave the lodge.
- theft across the mountain is a growing concern and Kongoola has a digital safe in each room to store valuables and a normal sized laptop.
- the cool room is usually at refrigerator temperature. Endeavour to store food and drink there rather than overload the fridges. You should label all food before placing it in the fridge, cool room, freezer or cupboards to avoid confusion.
- if you bring children to the lodge please remember it is community living. Therefore as a parent you are required to maintain control of your children at all times.
- as some members and guests sleep at unusual hours, everyone is required to keep quiet at all times in the bedroom area. A games room is provided specifically for recreational activities and is a great play area for kids.
- you are welcome to use the CD player on the stereo. If other guests are present please select a suitable volume. This also applies when using CD's or watching DVD's on personal computers. Children must not operate the sound equipment.
- please place all recyclables in the correct recycle bins provided in the kitchen.

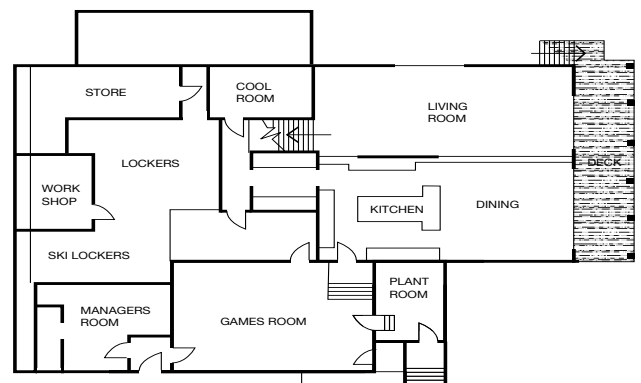
getting to kongoola

Kongoola can be found in Gallows court, Mt Hotham. Lodge telephone (03) 5759 3554.

To get to Kongoola take the Hume highway to Wangaratta and turn off onto the Great Alpine Road (B500). Drive through Bright and onto Harrietville before heading up the mountain. Kongoola is located a short distance past the Hotham General Store in the Davenport subdivision of Mt Hotham just behind Jack Frost.



Kongoola upper level



Kongoola lower level

code of conduct

The values listed below have been adopted by the Members of Kongoola and we require our guests and visitors to do likewise.

- have regard for the lodge and its facilities
- respect other members and guests also staying in the lodge (this includes language)
- have respect for people sleeping when entering or leaving the lodge, particularly in the evenings
- keep noise to an absolute minimum in the bedroom area at all times.
- smoking is not permitted within the lodge
- for the safety of children, please ensure that they have adult supervision at all times.
- do not allow children to play outside on the slope behind the lodge, this is a dangerous area
- encourage children to play in the games room rather than the lounge room
- please clean and put away all cooking utensils as soon as practical after use.
- complete your lodge duties on the prescribed day.

The Lodge Manager has the full support of the committee to enforce this code of conduct